



Gruppo **Tironi**

**Garanzia di qualità
e professionalità**

**NUOVO COMPLESSO
POLIFUNZIONALE**

Via Meer, Alzano Lombardo



*Attività industriali,
artigianali, box da camper,
commerciale, terziario e varie.*

Tel: 035.512202 • www.gruppotironi.com

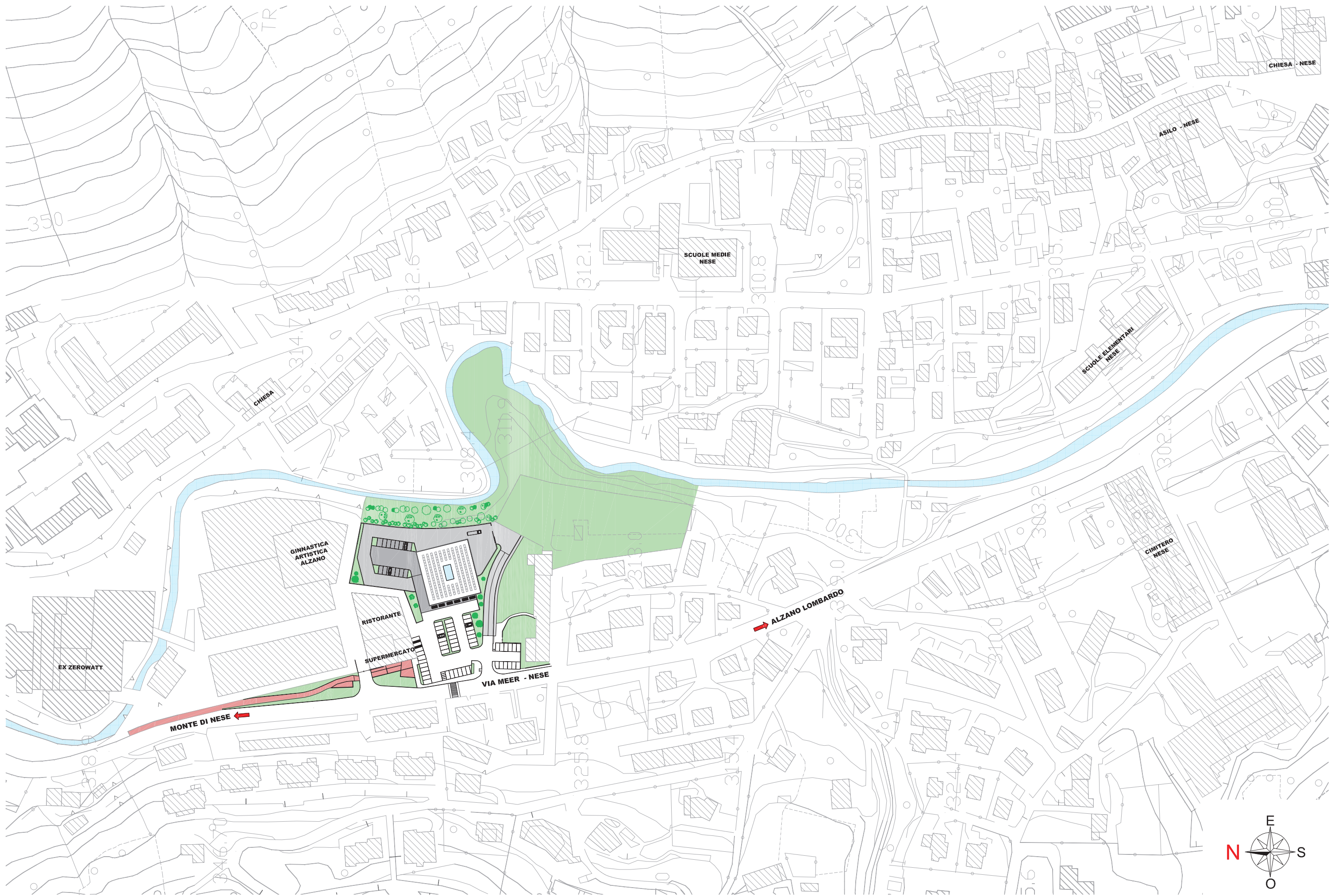
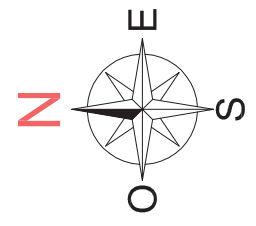
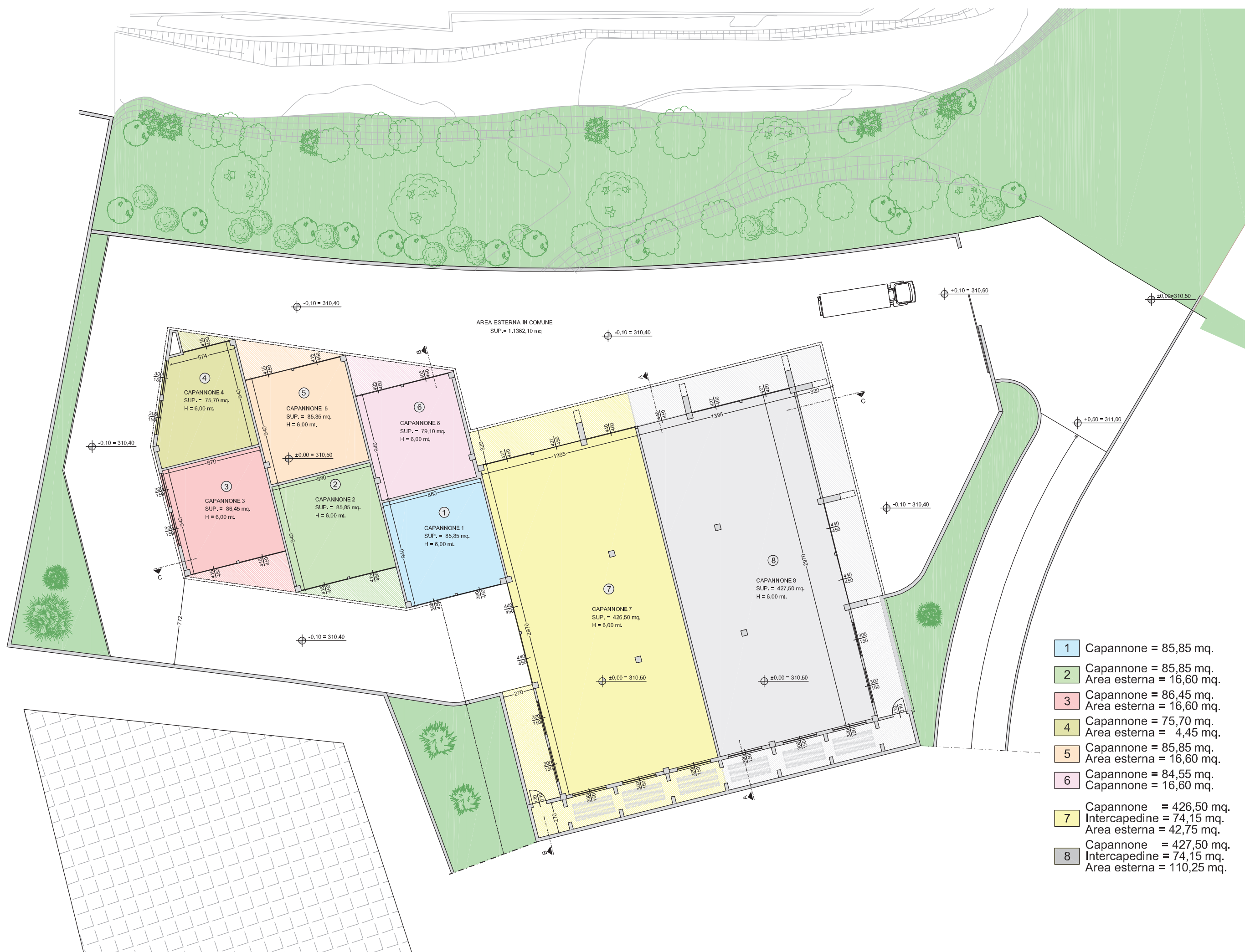


TAVOLA INQUADRAMENTO scala 1:2000

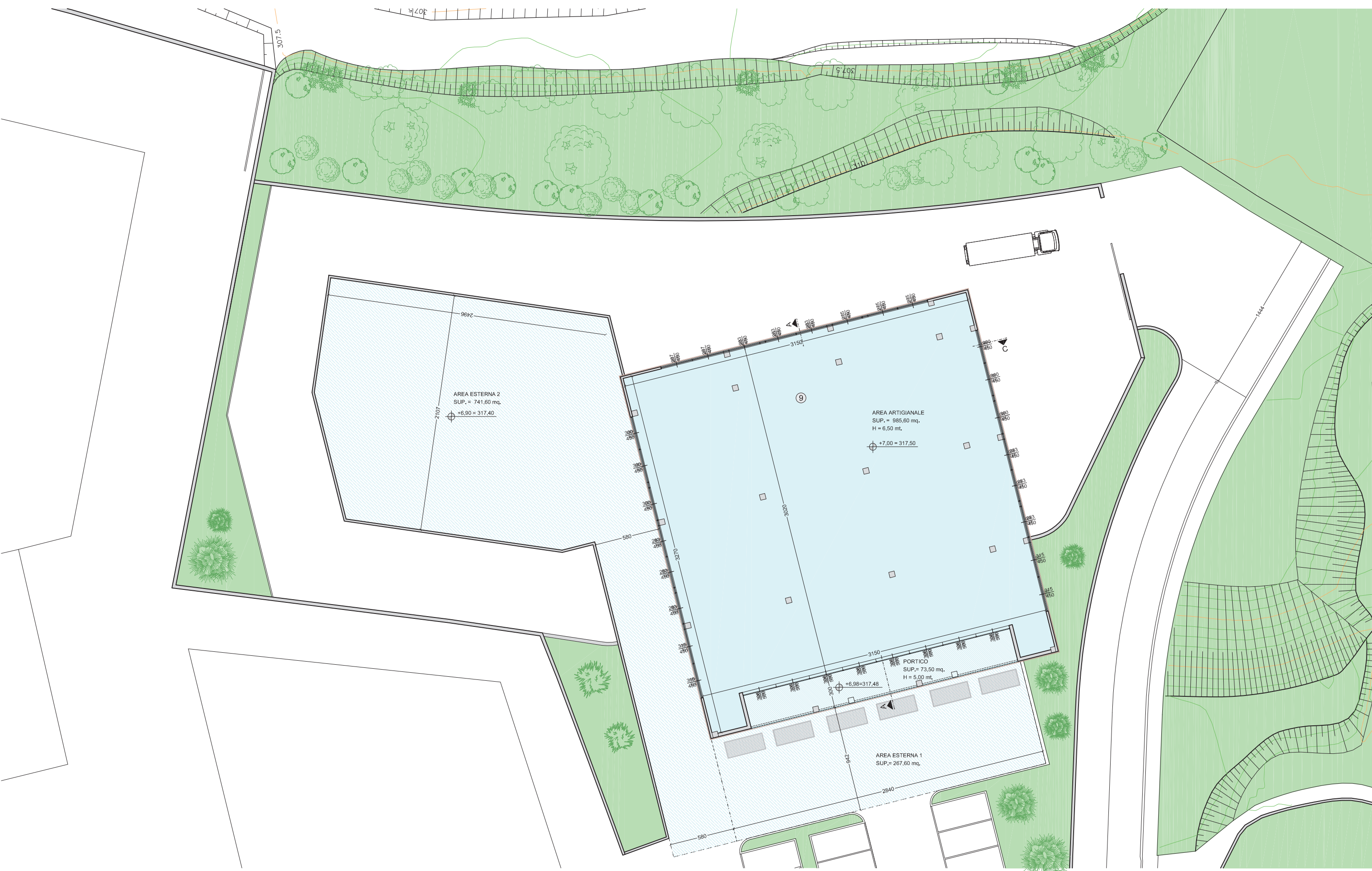


PLANIMETRIA GENERALE scala 1:500



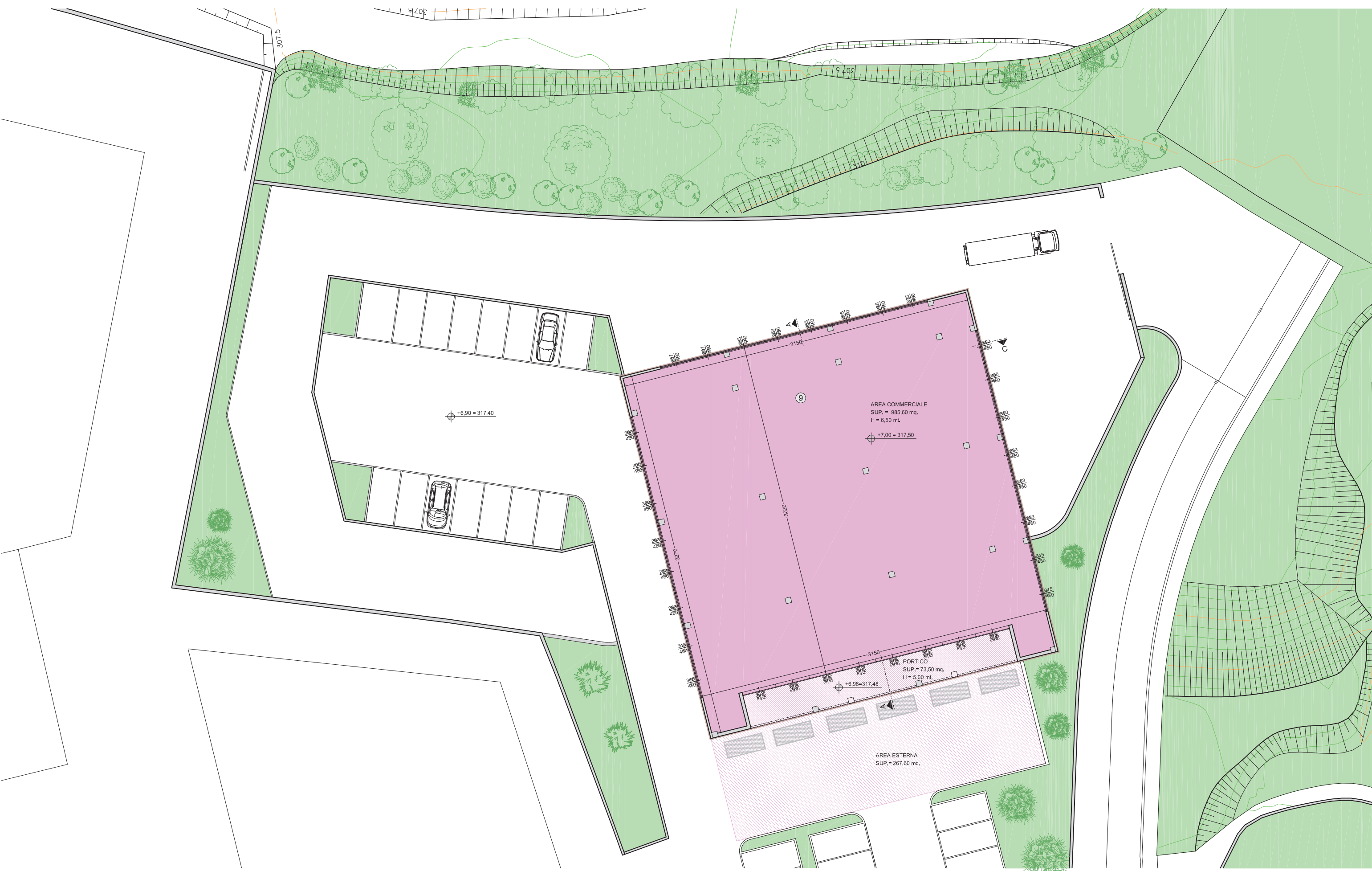
PIANTA PIANO TERRA scala 1:300

- 1 Capannone = 85,85 mq.
- 2 Capannone = 85,85 mq.
Area esterna = 16,60 mq.
- 3 Capannone = 86,45 mq.
Area esterna = 16,60 mq.
- 4 Capannone = 75,70 mq.
Area esterna = 4,45 mq.
- 5 Capannone = 85,85 mq.
Area esterna = 16,60 mq.
- 6 Capannone = 84,55 mq.
Capannone = 16,60 mq.
- 7 Capannone = 426,50 mq.
Intercapedine = 74,15 mq.
Area esterna = 42,75 mq.
- 8 Capannone = 427,50 mq.
Intercapedine = 74,15 mq.
Area esterna = 110,25 mq.



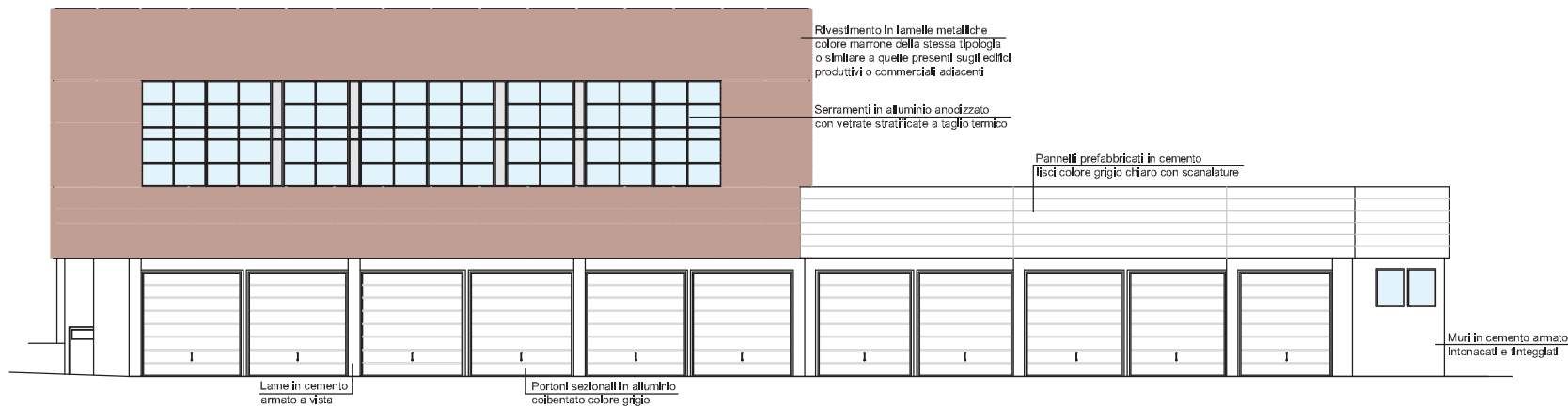
**PIANTA PIANO PRIMO con destinazione produttiva
scala 1:300**

- Area artigianale = 985,60 mq.
- 9 Portico = 73,50 mq.
- Area esterna 1 = 267,60 mq.
- Area esterna 2 = 741,60 mq.



**PIANTA PIANO PRIMO con destinazione commerciale
scala 1:300**

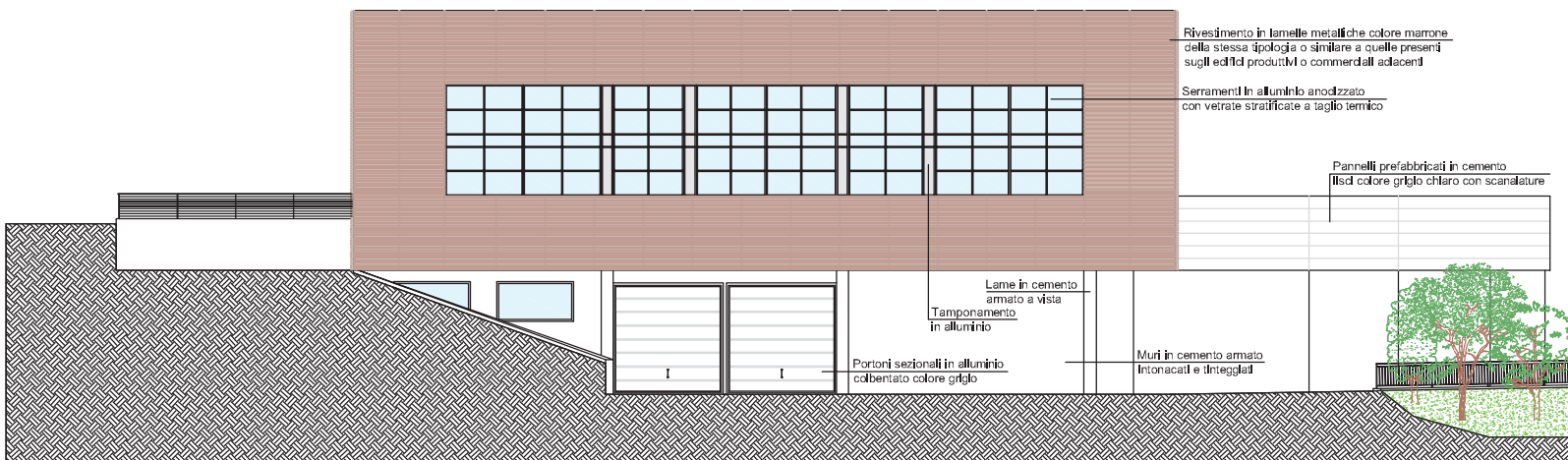
9 Area commerciale = 985,60 mq.
 Portico = 73,50 mq.
 Area esterna = 267,60 mq.



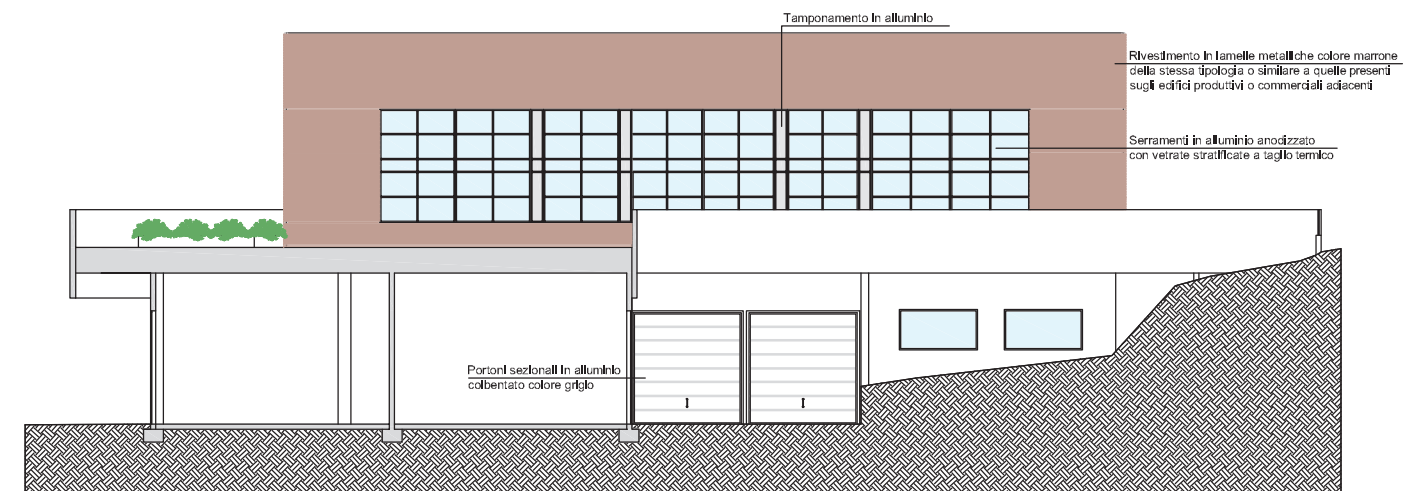
PROSPETTO EST scala 1:300



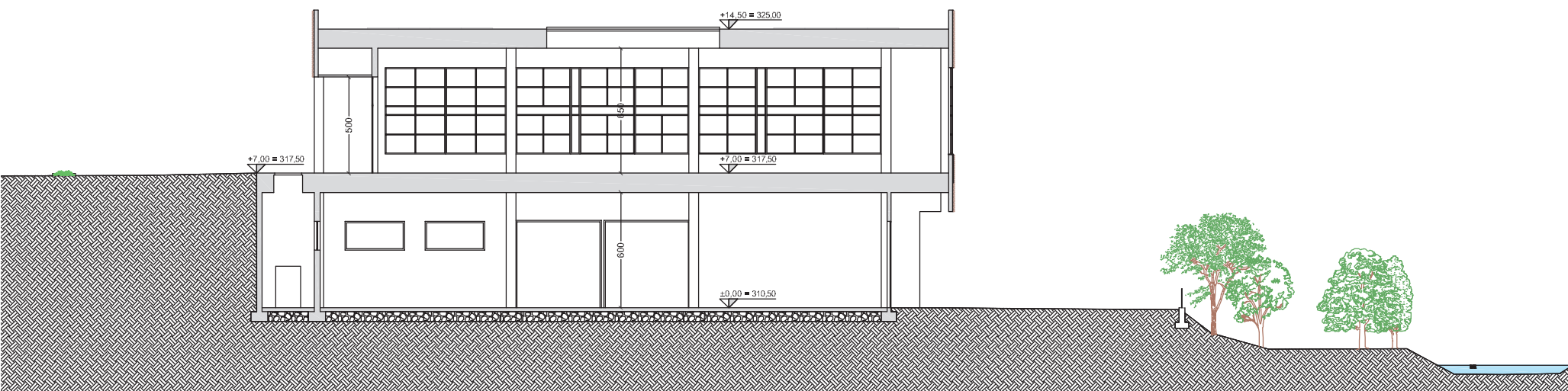
PROSPETTO OVEST scala 1:300



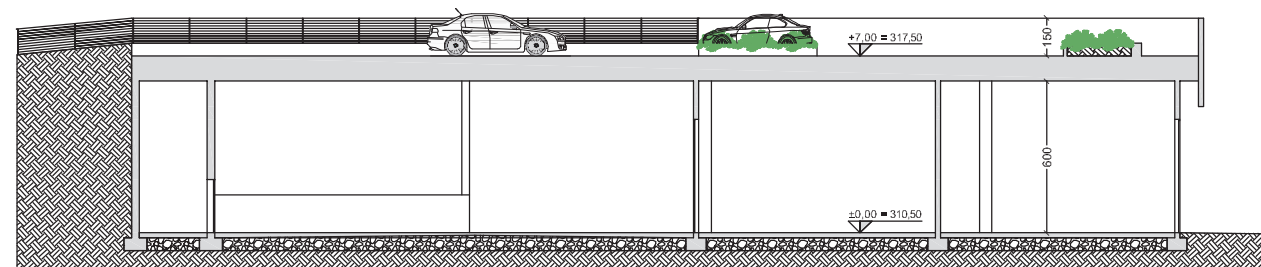
PROSPETTO SUD scala 1:300



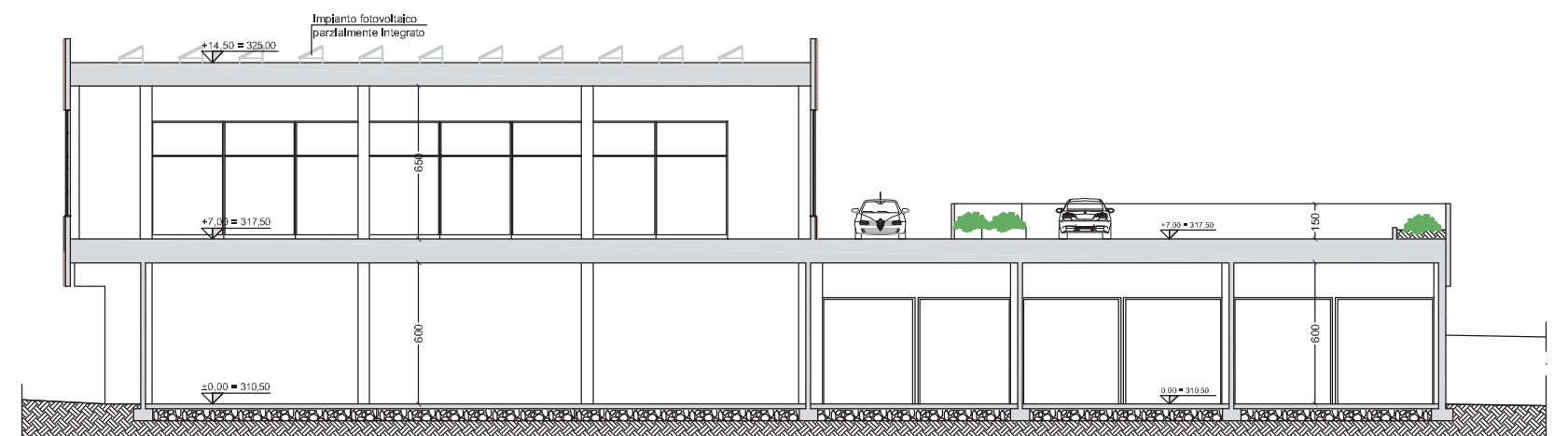
PROSPETTO NORD scala 1:300



SEZIONE A:A scala 1:300



SEZIONE B:B scala 1:300



SEZIONE C:C scala 1:300